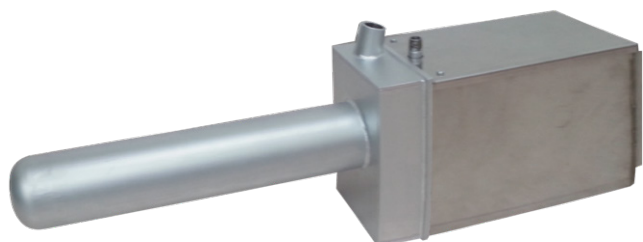


# Furnace monitoring equipment

- Furnace monitoring equipment made by glass manufacturer -



Nippon Electric Glass



ITV\* equipment

\*ITV:Industrial Television

Monitoring the inside of a high-temperature glass melting furnace using ordinary cameras can be challenging. However, by installing our advanced furnace monitoring equipment, real-time monitoring of furnace conditions and processes becomes possible. This helps safe operation of the furnace and stable glass melting processes.

## Features of our Furnace Monitoring Equipment

- Utilizes a lens tube system for a lightweight and compact design.
- Compact and lightweight equipment allows for easy installation  
(Size : Approx. 180×180×600mm, Weight : Approx. 20kg)
- High-quality images captured by a CCD camera and relay lens provide clear and detailed monitoring.
- Easy to maintain contributing to stability of the furnace condition.
- Our equipment has been successfully adopted in almost all of NEG's furnaces  
(Proven track record of use at a maximum furnace atmosphere temperature of 1,700° C)



Installation of ITV equipment



Image of inside of furnace

